



# RTFX™ Web Trader

**User Guide**  
**Version 5.2**

## Table of contents

<b>Table of contents .....</b>	<b>2</b>
<b>Overview .....</b>	<b>3</b>
System Requirements and Installation procedure.....	<b>Error! Bookmark not defined.</b>
Logging In.....	<b>Error! Bookmark not defined.</b>
Main page .....	<b>Error! Bookmark not defined.</b>
Orders & Trades.....	<b>Error! Bookmark not defined.</b>
Speed Trading.....	<b>Error! Bookmark not defined.</b>
<b>Open Positions, Active Orders &amp; Done Trades .....</b>	<b>22</b>
Open Positions Window .....	22
Active Orders Window .....	26
Today's Done Trades window .....	<b>Error! Bookmark not defined.</b>
<b>Instruments.....</b>	<b>28</b>
Introduction.....	<b>Error! Bookmark not defined.</b>
Instrument Price Windows.....	30
<b>Real time news.....</b>	<b>32</b>
<b>Charting.....</b>	<b>34</b>
<b>Menu bar .....</b>	<b>35</b>
Documents Menu .....	<b>Error! Bookmark not defined.</b>
Settings Menu .....	<b>Error! Bookmark not defined.</b>
Education Menu .....	<b>Error! Bookmark not defined.</b>
Help Menu .....	38
Headers .....	38
<b>Annex - Charting tool: ITCharts Light (2006).....</b>	<b>40</b>
Introduction.....	<b>Error! Bookmark not defined.</b>

---

## Overview

RTFX offers a foreign exchange trading service that allows all clients, big or small, to trade under professional trading conditions with a level of service banks do not provide. Using our Web Trading platform, “RTFX™ Web Trader”, clients are able to:

- Obtain and trade on real time running prices for all major currencies, gold and silver
- Receive immediate deal confirmation
- Place and amend conditional orders
- Monitor outstanding positions and margin requirements
- Manage multiple accounts
- Receive latest news flashes
- Access market comments and economic highlights

RTFX is now introducing its first generation of the RTFX™ Web Trader client Web platform. This new web trading access is designed to better serve RTFX clients by providing more information on a timely basis thus supporting and allowing quicker decisions and providing instantaneous responses. Thanks to RTFX™ Web Trader, our clients will be able to access their platform from everywhere with no need to first install Java or to download our RTFX™ Trader platform.

As a client of RTFX, you are obviously interested in foreign exchange trading. The first part of this manual, therefore, is dedicated to making trades and placing conditional orders. The second part presents the less important aspects of the RTFX™ Web Trader tool.

## SYSTEM REQUIREMENTS AND INSTALLATION PROCEDURE

RTFX™ Web Trader doesn't require any pre-processing action. The user just has to be connected to the Internet simply using a web browser.

### LOGGING IN

In order to start our **RTFX™ Web Trader** Web trading platform, you just have to connect to our web site <http://www.rtfx.com> and to follow the *Client Login* or *Demo Login* links.

In order to access our platforms, go to our website at <http://www.rtfx.com/> and, according to the type of account that you own, follow the *Client Login* or *Demo Login* links (top right of the homepage).



When logged in to your account home page, click on the **Start** link in order to open RTFX™ Web Trader.



When successfully logged in, the following page will appear. With this web trading platform, you will have access with just a few clicks to all data concerning your accounts, positions and orders, foreign currency exchange rates, and world news, dealing notably with Forex and world news in general.

All these trading tools can be accessed from this simple web platform, giving the user an easy way to trade.

The screenshot displays the RTFX Web Trader interface. At the top, there is a navigation bar with options like 'English', 'May 18, 2009 03:12:32 PM', 'my account', and 'Log off RTFX-Demo'. Below this is a menu bar with 'File', 'Documents', 'Education', 'FX News', 'Forums', 'My Account', 'RF Tradertip', 'Settings', and 'Help'. The main area is divided into several sections:

- Instruments:** A table listing various currency pairs with their current bid, ask, high, and low prices, and a column for 'Amount'.
- Open Positions:** A table for tracking active positions, including columns for ID, Pair, L/S, Amount, Open Price, Value Date, and Net P&L.
- Active Orders:** A table for monitoring pending orders, with columns for Position ID, Pair, B/S, Amount, Price, Validity, and Type.
- News:** A section displaying recent news items with columns for Provider, Date, and News content.
- Chart:** A candlestick chart for the EUR-USD pair, showing price movement over time with various technical indicators overlaid.
- Done Trades:** A section for reviewing completed trades.

At the bottom of the interface, there is a status bar showing account information such as 'RTFX-Demo-1, Client, Silver', 'Used Margin USD 0', and 'Available Margin USD 0'.

Occasionally RTFX sends flash messages, like the one shown below, to all connected clients informing them of some forex-related event or similar information. These messages are displayed under the menu bar.

The screenshot shows a red flash message box with the following text:

14:10:02                    The system will be in consultation mode for a few minutes,  
**Technical Service** thank you for your understanding.

Below the message is an 'OK' button.

## MAIN PAGE

This is the main page that appears when you login.

Prices are constantly updated by the system and broadcast instantaneously to all clients. Prices are shown in red if the latest price change was a drop and in green if it was a price rise.

Breaking forex-related news and general news are presented here, coming from different news providers, in different languages. See [News](#)

The menu bar allows the user to access quickly all our platform functionalities. See [Menus](#)

The client's current situation and recent trading history are given in this set of windows. One tab shows an overview of all open positions, the second one lists all active orders, the third lists all the trading activity of the current day. See [Open Positions, Active Orders & Done Trades](#)

This window summarises the account state: Virtual balance and different margins: used, maximum and available margin.

The charting facility gives the client a graphical view of a currency pair's evolution (available in 5, 10, 15, 30, 60, 240 minutes, 1 day or more view). The number of data from the historical prices set varies relating to the number of updates selected (from 2 days for a 5 min display, to 5 years for a weekly one).

The complete set of tradable currency pairs is presented in this set of tabbed windows. The client can initiate trades, place orders, and open price windows directly from this window. See [Instruments](#)

The client can have multiple accounts and manage them within one Realtime Forex session. There is no need to launch the system more than once. The client can switch from one account to another by clicking on the accounts links.

## ORDERS & TRADES

This is, in essence, what RTFX™ Web Trader is all about – the ability to trade foreign exchange in real time based on up to the second information and pricing.

### Entering a Trade

To make a trade with RTFX you will need to specify the instrument (currency pair), the amount, and whether you want to buy or sell. There is no need to specify the price – we will only accept the current one we have given you. In order to capture this information, we use the Deal Ticket.



There are several ways to open a Deal Ticket. The simplest is to click on the *Bid* (sell) or *Ask* (buy) price of the desired instrument (currency pair) in the *Instruments* window. The amount field of the deal ticket will be set to the one of the *Amount* field for this instrument. If you want to change this amount, you have to do it manually. You can also open a deal ticket by clicking on the instrument name. The price window will then open and you can choose to *buy* or to *sell* the specified amount by clicking on the appropriate button.

Instruments								[All]	[Hide]
Select		Pair	Bid	Ask	High	Low	Amount		
<input checked="" type="checkbox"/>		USD-JPY	95.79	95.83	96.00	94.55	100'000		
<input checked="" type="checkbox"/>		USD-CAD	1.1670	1.1675	1.1815	1.1652	100'000		
<input checked="" type="checkbox"/>		EUR-USD	1.3491	1.3494	1.3516	1.3424	100'000		

*Clicking on Bid or Ask in the Instruments list, or clicking on Buy or Sell in the Price window open a deal ticket*



### Deals on open positions

From the open positions window, you can open a deal ticket by clicking on the open position amount. This will open the Deal Ticket with the information required to close the position pre-specified (good amount and direction).

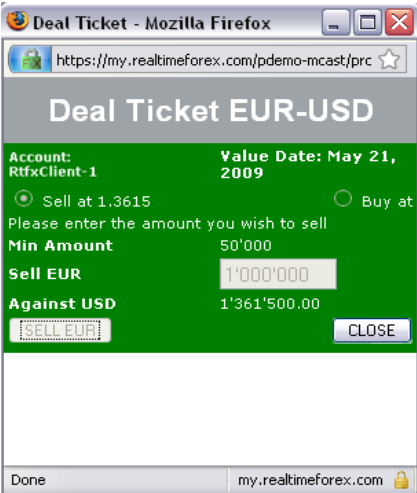
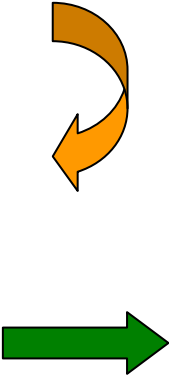
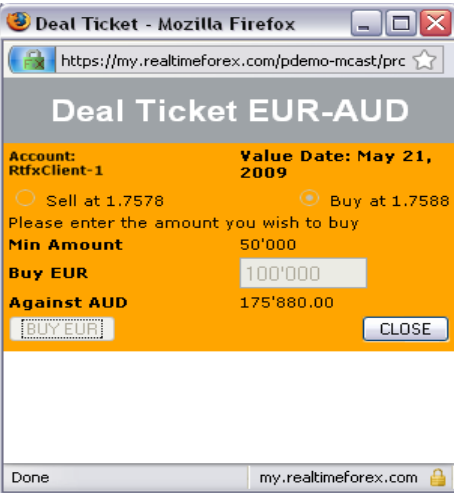
Open Positions							
<input type="checkbox"/> Aggregate positions <span style="color: green;">↕</span> <span style="color: red;">↕</span> <span style="border: 1px solid gray; padding: 2px;">Liquidate</span>							
ID	Pair	L/S	Amount	Open Price	Value Date	Net P&L	
1	EUR-CHF	Long	500'000	1.518500	20/05/09	CHF (3'500.00)	
2	EUR-USD	Long	1'000'000	1.355700	20/05/09	USD (7'900.00)	

As you can see, for open positions, the direction and the amount fields can't be modified. The only aim of this deal will be to close the position, generating a profit or a loss.



**Sending a deal**

At this point the only action is to click on the *Buy* (or *Sell*) button near the bottom of the Deal Ticket.



*Note: The time between the trade being received by the trader and being executed is normally a fraction of a second.*



In certain cases, due to insufficient margin or an inappropriate size of trade, the trader may reject the deal. This will be shown as follows.



### Placing a Conditional Order

Conditional Orders are essentially trades for which the client specifies the conditions for execution – i.e., the price. There are several types of Conditional Orders and these orders can be linked to one another. The types of orders are:

- **Limit:** Used to take profit when the price moves in your favour. This type of order is used to take the benefits of an existing position. It can also be used as an order to enter a new position at a more favourable position. For e.g. the price of EUR/USD is at 1.3667/70 and a limit order is placed, to take short (sell) position at 1.3700 or to enter long (buy) at 1.3630.
- **Stop:** An order to exit a position when it reaches a certain price. It is designed to limit an investor's loss on an open position. Setting a stop-loss order for 10% below the price you entered the position would limit your loss to 10%. A Stop Entry Order is placed to enter a new position at a less favourable price i.e. when buying a currency pair, the stop entry will be placed above the current market price and when selling, the stop entry will be placed below the current market price.
- **OCO:** The OCO order (One Cancel the Other) is a special kind of order where both limit and stop are linked. With this type of order, once one of the two active orders is executed, the second one is cancelled directly.

Conditional Orders are executed automatically by RTFX™ Web Trader when the specified price is reached.

They can be used alone or combined in a second type of order called “two-legged orders”. There are 2 sorts of two-legged orders:

- The **If Done Order** consists of two separate orders where the second order becomes active only if and when the first order has been executed. The first leg, a Limit or a Stop, is created

as active, while the second, a Limit, a Stop or even an OCO is set to a dormant status. When the price is touched for the first leg, this one is executed and the second leg becomes active.

- **A Loop Order** consists of two separate orders where, as in the case of the If Done Order, upon execution of the first leg, the second becomes active. A Loop Order differs from an If Done Order, in that after execution, the first leg returns to a dormant state and will become active again upon execution of the second leg. A Loop Order is a perpetual order and must be explicitly cancelled. The two legs of this type of order must be 2 Limits or 2 Stops, and always for the same amount.

Like we have seen for the Deal ticket, there are also several possibilities to open an order ticket.

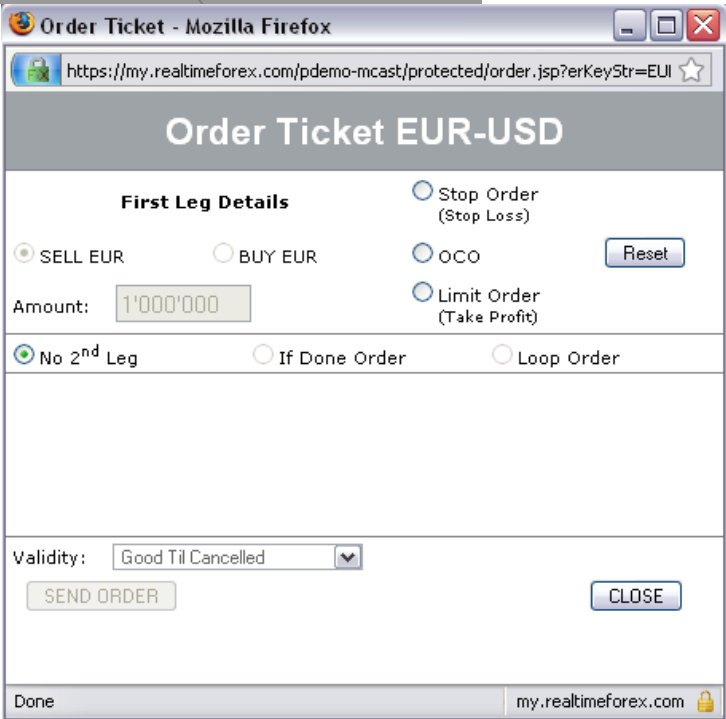
The Order Ticket can be invoked from the *Open Positions* window, the *Instruments* window, or one of the *Price windows*.

### Orders on open positions

When you open an order on an existing position (*Order* button in the Open positions list), the default order ticket fields are set with the predefined values in order to close this position. As we have seen for deal tickets, neither the amount nor the direction for order tickets on open positions can be modified. We are also unable to define a multiple order (with more than one leg), because these types of orders can't be linked to open positions.

ID	Pair	L/S	Amount	Open Price	Value Date	Net P&L
1	EUR-CHF	Long	500'000	1.518500	21/05/09	CHF (2'000.00)
2	EUR-USD	Long	1'000'000	1.356400	21/05/09	USD 1'200.00

Opening  
a linked  
order



*Linked order ticket:  
Limit order (one leg)*

**“Not linked” orders**

Not linked orders are those that are independent from an open position (this means that they are not dedicated to close a specified position, even if it’s possible that they do).

They can be called from the Instruments window (by clicking on the *Order* button), or from the Instrument Price window (*Order* button also). The order ticket default amount is set to the Instrument price window amount field value or to the *Amount* column default value (*Instruments* window) for this instrument.

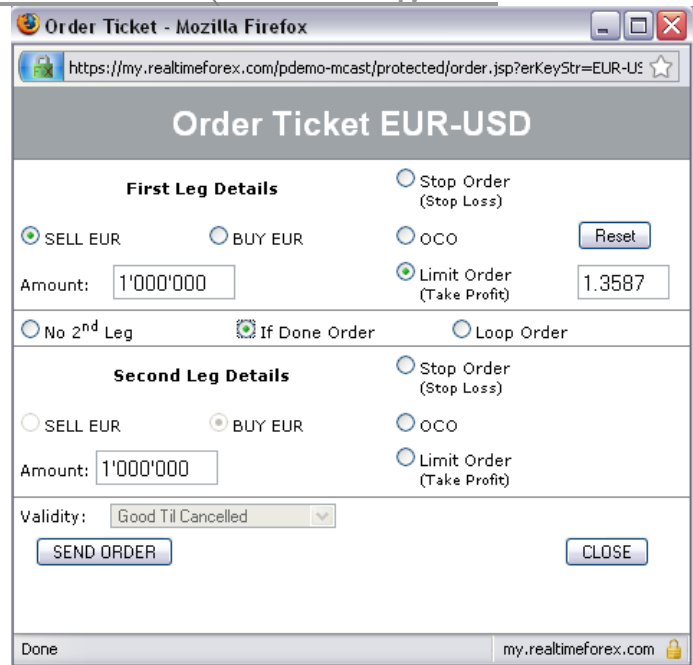
Open Positions							<input type="checkbox"/> Aggregate positions <span style="color: green;">↔</span> <span style="color: red;">↔</span> <span style="border: 1px solid black; padding: 2px;">Liquidate</span>
ID	Pair	L/S	Amount	Open Price	Value Date	Net P&L	
1	EUR-CHF	Long	500'000	1.518500	21/05/09	CHF (2'000.00)	<span style="border: 1px solid black; padding: 2px;">Order</span>
2	EUR-USD	Long	1'000'000	1.356400	21/05/09	USD 1'200.00	

Click on Order  
↓

*Opening  
a not  
linked  
order*

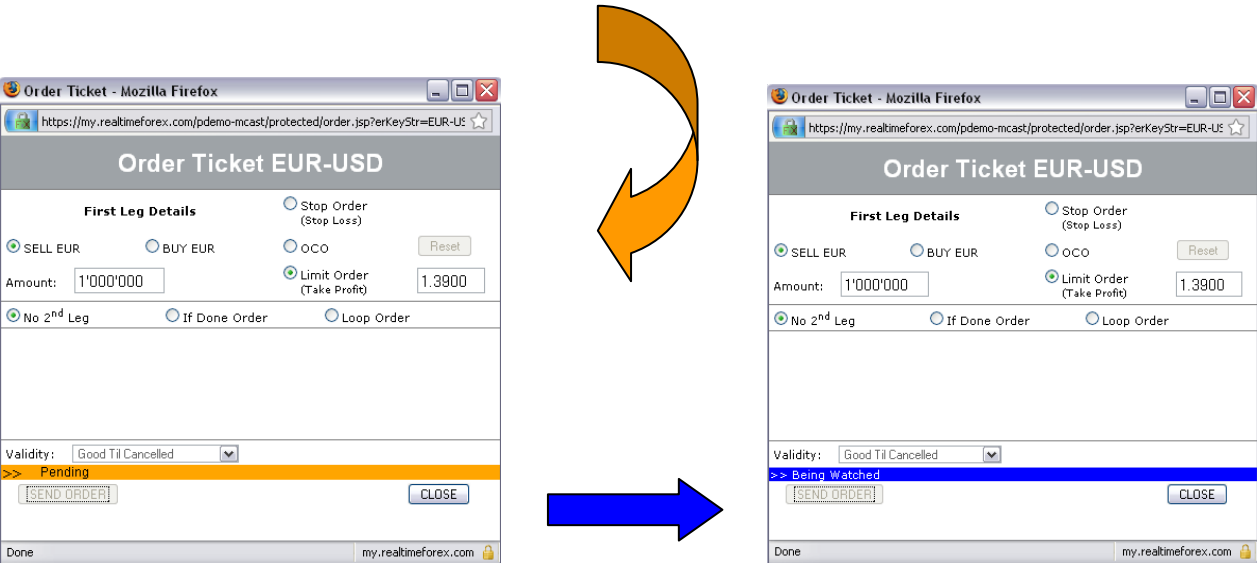
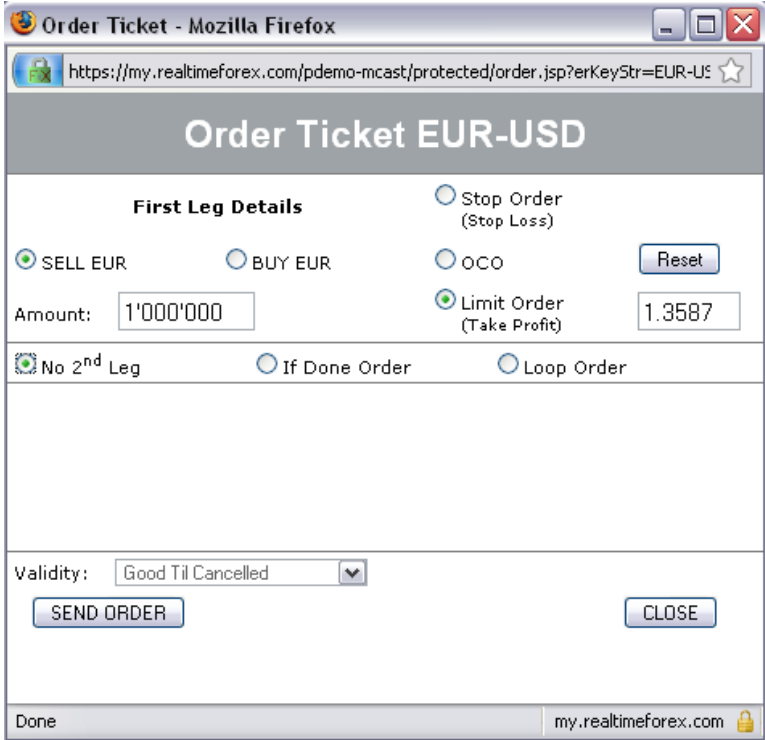


*Click on Order*



*Not linked ticket order:  
« IfDone » multiple order*

**One leg order sample**



*Note: The time between the order being received by the trader and being accepted is normally a fraction of a second. A “being watched” order is an accepted (active) order.*

**Active orders display**

Once an order enters the Active state, it is shown in the *Active Orders* window.

**Open Positions**

Aggregate positions ↕ ↕ Liquidate

ID	Pair	L/S	Amount	Open Price	Value Date	Net P&L	
1	EUR-CHF	Long	500'000	1.518500	21/05/09	CHF (2'550.00)	
2	EUR-USD	Long	1'000'000	1.359000	21/05/09	USD (1'200.00)	
3	EUR-USD	Long	1'000'000	1.356400	21/05/09	USD 1'400.00	

**Active Orders** [Hide]

Linked ID	Pair	B/S	Amount	Price	Validity	Type	
*	EUR-USD	Sell	(1'000'000)	1.3900	GTC	Limit	
3	EUR-USD	Sell	(1'000'000)	1.3690	GTC	Limit	

When the specified price has been reached, the order is automatically executed and you are informed of this with the following message (only if the order ticket is still open).

Order Ticket - Mozilla Firefox

https://my.realtimeforex.com/pdemo-mcast/protected/order.jsp?erKeyStr=EUR-USD

**Order Ticket EUR-USD**

**First Leg Details**

SELL EUR  BUY EUR  OCO  Stop Order (Stop Loss) Reset

Amount: 1'000'000   Limit Order (Take Profit)

No 2<sup>nd</sup> Leg  If Done Order  Loop Order

Validity: Good Til Cancelled

**>> Executed**

SEND ORDER! CLOSE

Done my.realtimeforex.com

Once executed, the order is entered into the *Today's Done Trades* along with the Spot trades:

Done Trades							[Hide]
Pair	B/S	Amount	Price	Time (CET)	Type	P&L	
EUR-USD	Sell	(1'000'000)	1.3990	2:28 PM	Spot	USD 5'400	

**Two-legged order sample**

Click on "If Done" or "Loop" Order  
Specify second leg conditions of execution




**Multiple Orders Types**

Order type	1 <sup>st</sup> leg	2 <sup>nd</sup> leg	2 <sup>nd</sup> leg Amount
If Done order	Limit or Stop	Limit	Open
		OCO	Open
		Stop	Open
Loop order	Limit	Limit	Same as 1 <sup>st</sup> leg
	Stop	Stop	Same as 1 <sup>st</sup> leg

When the specified price is reached for one leg of a two-leg order, that leg is automatically executed and the subsequent leg is automatically made active.

In the case of a Loop order, this will continue until the client explicitly cancels the order.

**Modify an order**

To modify an order you need to open the appropriate *Order ticket* by clicking on the *Modify* button of your order in the Active Order window:

Active Orders							[Hide]
Linked ID	Pair	B/S	Amount	Price	Validity	Type	
1	EUR-CHF	Sell	(500'000)	1.5235	GTC	Limit	 
2	GBP-USD	Sell	(1'000'000)	1.6200	GTC	Limit	 
*	EUR-USD	Buy	1'000'000	1.3500	GTC	IfDone Limit	 

Click



Order Ticket - Mozilla Firefox

https://my.realtimeforex.com/pdemo-mcast/protected/modify\_order.jsp?order

### Order Ticket EUR-USD

**First Leg Details**

SELL EUR     BUY EUR     Stop Order (Stop Loss)     OCO   

Amount:      Limit Order (Take Profit)   

No 2<sup>nd</sup> Leg     If Done Order     Loop Order

**Second Leg Details**

SELL EUR     BUY EUR     Stop Order (Stop Loss)   

Amount:      OCO         Limit

Validity:     

Done my.realtimeforex.com



After modifying the price, you need to click on "Modify" to send the modification to Realtime Forex.



## SPEED TRADING

Some clients may prefer to take some shortcuts when trading. For these clients, we have created Single Step Mode. This option may be selected for all instruments from the Account Homepage, by clicking on 'my account' then clicking on 'WEB TRADER PLATFORM' from the account homepage.

Single Step Mode simply bypasses the Deal Ticket by a simple click on the *Bid* or *Ask* prices in the Instruments window, or *Buy* or *Sell* in the Instrument Price window. The default amount of the deal will be the one in the *Amount* field (*Price* window) or column (*Instruments* window).

The following messages indicates the single step mode

Instruments SINGLE STEP MODE								[All]	[Hide]
Select		Pair	Bid	Ask	High	Low	Amount		
<input checked="" type="checkbox"/>	—	USD-JPY	95.01	95.05	95.09	94.29	100'000		
<input checked="" type="checkbox"/>	—	USD-CAD	1.1446	1.1451	1.1473	1.1348	100'000		
<input checked="" type="checkbox"/>	—	EUR-USD	1.3766	1.3766	1.3839	1.3740	1'000'000		
<input checked="" type="checkbox"/>	—	EUR-CHF	1.5132	1.5132	1.5132	1.5132	100'000		
<input checked="" type="checkbox"/>	—	EUR-AUD	1.7853	1.7863	1.7922	1.7727	100'000		
<input checked="" type="checkbox"/>	—	GBP-USD	1.5661	1.5665	1.5817	1.5515	100'000		
<input checked="" type="checkbox"/>	—	NZD-USD	0.6041	0.6046	0.6110	0.6017	100'000		

A red arrow points from the text on the left to the 'EUR-CHF' row. A tooltip box is overlaid on the 'Ask' price '1.5132' of the 'EUR-CHF' row, containing the text: 'Single click activated ! Sell EUR-USD'.

Once a trade has been executed, evidence of it is shown in the *Today's Done Trades* window. The trade will also create, modify, or remove an entry in the *Open Positions* window.

## Open Positions, Active Orders & Done Trades

This group of windows provides a summary view of the client account and trading activity. It contains executed trades, information of current exposure and active conditional orders.

### Open Positions Window

This window shows the client's current exposure.

*Account type (this is "Long & Short" account, which means that this account can accept long and short positions at the same time for the same instrument and value date. If this Icon is not present, it's a "normal" account.*

*The Net P&L (Net Profits and Losses) is derived by calculating the difference between the opening price and the current price, multiplied by the open amount, on which we remove daily close swap for positions still open after one day or more. This would be the profit (green) or the loss (red) realised if the position was closed at current price.*

*The ID linked orders with the related position(s)*

Original opening price of the position

Open Positions								<input type="checkbox"/> Aggregate positions <span style="float: right;">← →</span>		Liquidate
ID	Pair	L/S	Amount	Open Price	Value Date	Net P&L				
1	EUR-CHF	Long	500'000	1.518500	21/05/09	CHF (2'550.00)				
2	EUR-USD	Long	1'000'000	1.359000	21/05/09	USD (1'200.00)				
3	EUR-USD	Long	1'000'000	1.356400	21/05/09	USD 1'400.00				

Active Orders								[Hide]
Linked ID	Pair	B/S	Amount	Price	Validity	Type		
*	EUR-USD	Sell	(1'000'000)	1.3900	GTC	Limit		
3	EUR-USD	Sell	(1'000'000)	1.3690	GTC	Limit		

From the *Open positions* window the user can close the position by opening a deal ticket (click on the *Amount* value of the position), or add a linked order to this position (*Order* Button)

Changing units for Net P&L display modifies the values on the Net P&L Column. It can be done by clicking on 'my account' then clicking on 'WEB TRADER PLATFORM' from the account homepage, and changing the *PNL Display Mode* value.

**MY PROFILE**

Login : emmanxuereb

First Name : Emman

Last Name : Xuereb

[Change Password](#)

Email : horeply@rtfx.com

Phone : 123456

Mobile : 123456

Language : English

**Other information**  
To view other relevant information (postal address...), [click here.](#)

**OK**

ONLINE TRADING SERVICES.

**RTFX™ Web Trader**

Single Step  
 Lots Mode

PNL Display Mode

Account Currency |  
 Trade Currency  
 Account Currency  
 Pips

▶ BACK TO MY ACCOUNT HOMEPAGE

**Positions aggregation**

For each currency pair (Instrument), if the client has more than one open position, he can aggregate them by instrument and value date.

Simple display (we can see positions identifiers):

Aggregate positions

ID	Pair	L/S	Amount	Open Price	Value Date	Net P&L	
1	USD-CAD	Short	(100'000)	1.143300	25/05/09	CAD (70.00)	
2	USD-CAD	Long	100'000	1.143800	25/05/09	CAD (30.00)	
3	GBP-USD	Long	1'000'000	1.566800	25/05/09	USD (700.00)	
4	USD-CAD	Short	(100'000)	1.143200	25/05/09	CAD (80.00)	
5	GBP-USD	Long	1'000'000	1.567500	25/05/09	USD (1'400.00)	

Aggregated display (as the aggregated position is not a real position but only a consolidated one, showing the risk taken, it has no identifier):

Aggregate positions

Pair	L/S	Amount	Open Price	Value Date	Net P&L	
GBP-USD (Aggr)	Long	2'000'000 (Aggr)	1.567150	25/05/09	USD (2'300.00)	
USD-CAD (Aggr)	Short	(100'000) (Aggr)	N/A	25/05/09	CAD (180.00)	

Amounts are cumulated and the original opening price is calculated from the different prices and amounts of each position.

For an easier way of use, the platform gives the possibility to close the set of positions in the same instrument, in only one step, by clicking on the aggregated position *Amount* field (this feature does not apply if the client has an aggregate position of both long and short positions).

*Click on aggregated amount*

This action opens a deal ticket, which is not linked to a specific position (you can modify this ticket), but whose default values are the correct ones to close the entire set of positions for the selected instrument (accumulated amount and direction).

**WARNING:** this possibility is only offered when the client is only in a long or short position. It does not apply when the aggregate position contains both long and short positions. If a client tries to use this feature when in both long and short position, a warning message will appear if the user tries to close an aggregated position, telling him it's not possible for this type of account.



**“Long & Short” accounts**

For “Long & Short” accounts, which can have long and short positions at the same time for the same instrument, it’s also possible to visualise these positions like an aggregated position.

Simple display:

Aggregate positions L S Liquidate

ID	Pair	L/S	Amount	Open Price	Value Date	Net P&L	
1	USD-CAD	Short	(100'000)	1.143300	25/05/09	CAD (70.00)	
2	USD-CAD	Long	100'000	1.143800	25/05/09	CAD (30.00)	
3	GBP-USD	Long	1'000'000	1.566800	25/05/09	USD (700.00)	
4	USD-CAD	Short	(100'000)	1.143200	25/05/09	CAD (80.00)	
5	GBP-USD	Long	1'000'000	1.567500	25/05/09	USD (1'400.00)	

Aggregated display:

Aggregate positions L S Liquidate

Pair	L/S	Amount	Open Price	Value Date	Net P&L	
GBP-USD (Aggr)	Long	2'000'000 (Aggr)	1.567150	25/05/09	USD (2'300.00)	
USD-CAD (Aggr)	Short	(100'000) (Aggr)	N/A	25/05/09	CAD (180.00)	

For these kinds of positions, you can eventually cumulate positive and negative amounts (like in this example). This aggregated amount represents the risk taken by the trader. The opening price however cannot be calculated in the Long and Short mode (not representative).

**Warning:** *In the Long and Short Mode, every trade opens a new position, and a position is closed only if you decide explicitly to do so by selecting the position and opening a trade on it (click on the Amount field of the not aggregated position).*

*You can also close a position by adding a linked order on this position. Once the order is executed, the position will be closed.*

**Net P&L detail for open positions**

For each open position, the client can see the detail of his net profit or loss by opening the tooltip of the Net P&L Cell. A table appears, giving this information.

ID	Pair	L/S	Amount	Open Price	Value Date	Net P&L	
1	USD-CAD	Short	(100'000)	1.143300	25/05/09	CAD (380.00)	
2	USD-CAD	Long	100'000	1.143800	25/05/09	CAD 280.00	

Net P&L			
= Price difference	+ Swap	= Booked P&L	+ Virtual P&L
CAD 270	CAD 0	CAD 0	CAD 270

This tooltip indicates, for each position that the Net P&L is:

- The difference between the original opening price and the current price multiplied by the amount of the deal, minus daily swaps for this position (currency rate changes).

Which is the same as:

- The sum of the booked P&L (done each day at daily close, 11:00 pm) and the virtual P&L of the day (as long as the position remains open).

Each evening at 11 PM, the daily close procedure moves your positions to the next value date with the swapping process. In version 4.6, after this process, you could see only the price of the swap reopen for your opened positions. With version 5.0, all details are available to you, even if your position was opened 5 years ago! You will still see the price of the trade that opened that position, and the tooltip on the Net P&L shows which part of it is booked, and which part is not (virtual).

This tooltip is displayed, as well as all the open positions, in the unit selected (trade currency, account currency or pips).

Naturally, there is neither swap nor booked P&L for positions opened the current day.

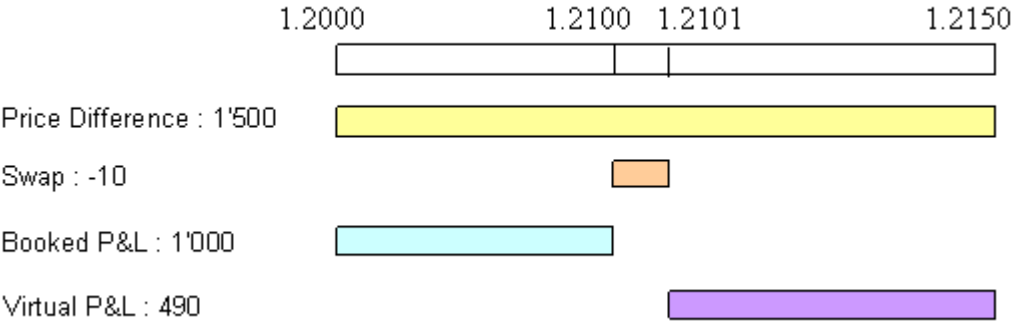
ID	Pair	L/S	Amount	Open Price	Value Date	Net P&L	
1	USD-CAD	Short	(100'000)	1.143300	25/05/09	CAD (380.00)	
2	USD-CAD	Long	100'000	1.143800	25/05/09	CAD 280.00	

Net P&L			
= Price difference	+ Swap	= Booked P&L	+ Virtual P&L
CAD 270	CAD 0	CAD 0	CAD 270

**Explanation of the Net P&L**

Let's say you've opened your 100'000 position at 1.2000. The daily close is done at 1.2100, and you pay 1 swap point. You're then checking your position while the price is at 1.2150. The Net P&L gives you the exact amount of your gain on this position since its opening.



Net P&L = Price Difference + Swap = Booked P&L + Virtual P&L

1'490 = 1'500 + (-10) = 1'000 + 490

**Active Orders Window**

This window shows any pending Conditional Orders awaiting execution.

*The ID links orders with positions*

Active Orders							[Hide]
Linked ID	Pair	B/S	Amount	Price	Validity	Type	
5	GBP-USD	Sell	(1'000'000)	1.5880	GTC	IfDone Limit	
4	USD-CAD	Buy	100'000	1.1350	GTC	Limit	
2	USD-CAD	Sell	(100'000)	1.1500	GTC	Limit	
3	GBP-USD	Sell	(1'000'000)	1.5880	GTC	Limit	
1	USD-CAD	Buy	100'000	1.1350	GTC	Limit	

This indicates the type of order.

- Stop = stop loss-stop order*
- Limit = take profit-limit order*
- OCO = OCO order*
- Loop Limit = Loop order*
- If Done Limit = first/second leg profit order of an If Done limit order*
- If Done Stop = first/second leg stop order of an If Done Stop order*
- If Done OCO = second leg profit and limit order of an If Done order*

The Active Orders window allows the client to:

- Display an order details (*Modify* button),

- Cancel an order (*Cancel* button),

**TODAY'S DONE TRADES WINDOW**

All trading activity carried out during the current day is shown in this window. This includes Spot trades as well as Conditional Orders that have been executed.

Done Trades							[Hide]
Pair	B/S	Amount	Price	Time (CET)	Type	P&L	
GBP-USD	Buy	1'000'000	1.5668	2:25 PM	Spot	0	
USD-CAD	Sell	(100'000)	1.1432	2:22 PM	Spot	0	
USD-CAD	Sell	(100'000)	1.1433	2:22 PM	Spot	0	
USD-CAD	Buy	100'000	1.1438	2:22 PM	Spot	0	
GBP-USD	Buy	1'000'000	1.5675	2:16 PM	IfDone Stop	0	
GBP-USD	Sell	(1'000'000)	1.5761	7:11 AM	Spot	USD 800	
EUR-CHF	Sell	(500'000)	1.5166	7:11 AM	Spot	CHF 450	
GBP-USD	Buy	1'000'000	1.57530	11:01 PM	Swap Reopen	0	
EUR-CHF	Buy	500'000	1.51570	11:01 PM	Swap Reopen	0	

*This indicates the type of transaction.*

*Profits and losses of the day*

- Spot* = spot trade
- Stop/Limit* = either a stop order  
or a limit order execution
- Stop+ / Limit+* = parts of OCO
- Swap Reopen* = opening leg of a swap
- If Done Stop / Limit* = either an If Done Stop  
or an If Done Limit order execution
- If Done Stop+ / Limit+* = parts of If Done OCO
- Loop Limit* = Loop Order execution

## Instruments

### INTRODUCTION

The *Instruments* window shows the currency pairs selected by the user.

Instruments								[All]	[Hide]
Select		Pair	Bid	Ask	High	Low	Amount		
<input checked="" type="checkbox"/>		USD-JPY	94.57	94.61	95.09	94.29	<input type="text" value="100'000"/>		
<input checked="" type="checkbox"/>		USD-CAD	1.1477	1.1482	1.1482	1.1348	<input type="text" value="100'000"/>		
<input checked="" type="checkbox"/>		EUR-USD	1.3735	1.3738	1.3839	1.3728	<input type="text" value="1'000'000"/>		
<input checked="" type="checkbox"/>		EUR-CHF	1.5171	1.5174	1.5200	1.5132	<input type="text" value="100'000"/>		
<input checked="" type="checkbox"/>		EUR-AUD	1.7894	1.7904	1.7922	1.7727	<input type="text" value="100'000"/>		
<input checked="" type="checkbox"/>		GBP-USD	1.5656	1.5660	1.5817	1.5515	<input type="text" value="1'000'000"/>		
<input checked="" type="checkbox"/>		NZD-USD	0.6020	0.6025	0.6110	0.6017	<input type="text" value="100'000"/>		

Clicking on “” opens an external window with the Graphic tool related to the selected pair instrument. See [Annex: Charting tool](#).



In order to choose the different instruments with their default amounts, the user can on 'All'. Then the client needs to modify this table according to his/her preference. The checked boxes on the left side indicate the instruments that will be shown.

Instruments								[All]	[Hide]
Select		Pair	Bid	Ask	High	Low	Amount		
<input checked="" type="checkbox"/>		USD-JPY	94.57	94.61	95.09	94.29	100'000		
<input checked="" type="checkbox"/>		USD-CAD	1.1477	1.1482	1.1482	1.1348	100'000		
<input checked="" type="checkbox"/>		EUR-USD	1.3735	1.3738	1.3839	1.3728	1'000'000		
<input checked="" type="checkbox"/>		EUR-CHF	1.5171	1.5174	1.5200	1.5132	100'000		
<input checked="" type="checkbox"/>		EUR-AUD	1.7894	1.7904	1.7922	1.7727	100'000		
<input checked="" type="checkbox"/>		GBP-USD	1.5656	1.5660	1.5817	1.5515	1'000'000		
<input checked="" type="checkbox"/>		NZD-USD	0.6020	0.6025	0.6110	0.6017	100'000		

Instruments								[Only Selected]	[Hide]
Select		Pair	Bid	Ask	High	Low	Amount		
<input type="checkbox"/>		USD-CHF	1.1030	1.1034	1.1050	1.0960	100'000		
<input checked="" type="checkbox"/>		USD-JPY	94.62	94.66	95.09	94.29	100'000		
<input checked="" type="checkbox"/>		USD-CAD	1.1458	1.1463	1.1482	1.1348	100'000		
<input type="checkbox"/>		USD-HKD	7.7517	7.7527	7.7534	7.7518	100'000		
<input type="checkbox"/>		USD-SGD	1.4596	1.4604	1.4615	1.4544	100'000		
<input type="checkbox"/>		USD-ZAR	8.4472	8.4772	8.4875	8.3170	100'000		
<input type="checkbox"/>		USD-CZK	19.4180	19.4680	19.5413	19.2560	100'000		
<input type="checkbox"/>		USD-DKK	5.4134	5.4184	5.4237	5.3805	100'000		
<input type="checkbox"/>		USD-HUF	203.26	203.76	205.20	199.73	100'000		
<input type="checkbox"/>		USD-NOK	6.4261	6.4311	6.4355	6.3685	100'000		
<input type="checkbox"/>		USD-PLN	3.1992	3.2092	3.2130	3.1465	100'000		
<input type="checkbox"/>		USD-SEK	7.5987	7.6037	7.6500	7.5676	100'000		
<input type="checkbox"/>		USD-MXN	13.0753	13.0813	13.0975	12.9905	100'000		
<input checked="" type="checkbox"/>		EUR-USD	1.3752	1.3755	1.3839	1.3728	1'000'000		
<input checked="" type="checkbox"/>		EUR-CHF	1.5164	1.5167	1.5200	1.5132	100'000		
<input type="checkbox"/>		EUR-JPY	130.16	130.20	131.14	129.84	100'000		
<input type="checkbox"/>		EUR-GBP	0.8771	0.8774	0.8870	0.8723	100'000		
<input type="checkbox"/>		EUR-CAD	1.5760	1.5767	1.5780	1.5666	100'000		
<input type="checkbox"/>		EUR-NZD	2.2792	2.2817	2.2869	2.2595	100'000		
<input checked="" type="checkbox"/>		EUR-AUD	1.7894	1.7904	1.7922	1.7727	100'000		

At next connection, the user will find his selected instruments in the appropriate table.

**Instruments list columns**

Each column of the Instruments list indicates specific information about the instrument.

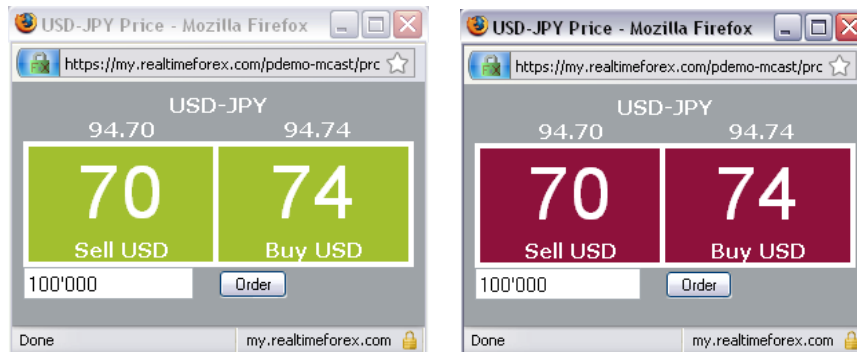
Instruments								[All]	[Hide]
Select		Pair	Bid	Ask	High	Low	Amount		
<input checked="" type="checkbox"/>		USD-JPY	94.57	94.61	95.09	94.29	100'000		
<input checked="" type="checkbox"/>		USD-CAD	1.1477	1.1482	1.1482	1.1348	100'000		
<input checked="" type="checkbox"/>		EUR-USD	1.3735	1.3738	1.3839	1.3728	1'000'000		
<input checked="" type="checkbox"/>		EUR-CHF	1.5171	1.5174	1.5200	1.5132	100'000		
<input checked="" type="checkbox"/>		EUR-AUD	1.7894	1.7904	1.7922	1.7727	100'000		
<input checked="" type="checkbox"/>		GBP-USD	1.5656	1.5660	1.5817	1.5515	1'000'000		
<input checked="" type="checkbox"/>		NZD-USD	0.6020	0.6025	0.6110	0.6017	100'000		

- : indicates the rate tendency (rise up, stable or fall down)
- Pair:** the instrument name.
- Bid:** the current Bid price of the instrument
- Ask:** the current Ask price of the instrument
- High:** the highest price reached today by the instrument
- Low:** the lowest price reached today by the instrument
- Amount:** default amount for deals and orders.
- : click to insert an unlinked order for the instrument
- : click to open an external chart window for the instrument

**INSTRUMENT PRICE WINDOWS**

RTFX™ Web Trader also presents exchange rates via the *Price windows*. The user can open them by clicking on the instrument name in the *Instruments* window.

The Price windows show the latest rates in **green** if the last change was a price rise and in **red** if the last update was a drop in the price.



Each Price window presents an instrument with its latest price as well as the **default trade amount**.

---

You can choose to add a new order (not linked) by clicking on the *Order* button or to make a trade by clicking on the *Buy or Sell* prices. This action will open a ticket (deal or order ticket).

## Real time news

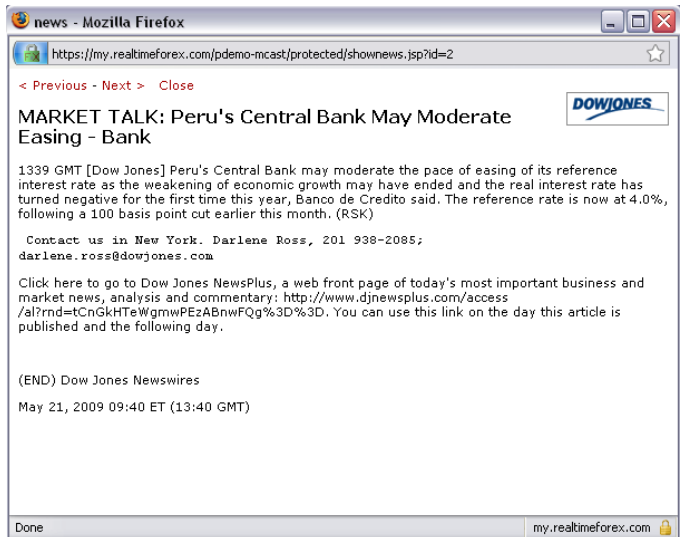
Through an agreement with *DowJones Newswire* for the foreign exchange market, and other news providers like *RTFX, Reuters, Le Monde.fr, the AFP* or *Le Temps.ch*, RTFX provides a brand new access to the world's latest news.

News is published every few seconds, alerting RTFX™ Web Trader clients to important news which could affect the foreign exchange market.

The News layout offers 4 pre-defined filtering:

- The last 10 news received
- *Dow Jones Market Talk* articles
- Calendar events' related articles
- Important news (tagged as "hot")

News		[Hide]
Provider	Date	News
<a href="#">DOWJONES</a>	15:41	MARKET TALK: Mexico Peso Opens Weaker
<a href="#">DOWJONES</a>	15:41	MARKET TALK: Mexico Peso Opens Weaker
<a href="#">DOWJONES</a>	15:40	MARKET TALK: Peru's Central Bank May Moderate Easing - Bank
<a href="#">DOWJONES</a>	15:39	Rep Frank: Muni Bond Changes Will Save Taxpayers Money
<a href="#">DOWJONES</a>	15:38	Brazil Real Opens Slightly Weaker Amid Growing Risk Aversion
<a href="#">DOWJONES</a>	15:35	CH/Libor 3 mois CHF à 0,40167 (0,40167)% - BNS vise 0,25%
<a href="#">DOWJONES</a>	15:34	China: Industriestaaten sollen CO2-Ausstoß um 40% senken
<a href="#">DOWJONES</a>	15:34	CH/3-Mte-CHF Libor bei 0,40167 (0,40167)% - SNB-Ziel 0,25%
<a href="#">DOWJONES</a>	15:26	4-WOCHENVORSCHAU SCHWEIZ
<a href="#">DOWJONES</a>	15:25	TAGESVORSCHAU 22.05.2009



*Clicking on news displays the detailed content, in an external window.*



## Charting

The Charting window in RTFX™ Web Trader allows clients to view the movements of prices over time. The number of data from the historical prices set varies relating to the number of updates selected (from 2 days for a 5 minutes display, to 5 years for a weekly display).



In the last paragraph, as an annex, you will find the Charting user guide (see [Annex – Charting tool](#)).

This guide is brought to you by *IT Finance* Company, who is in partnership with RTFX for this tool.

## Menu bar

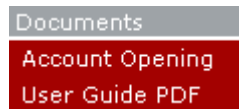


### FILE

When clicking on *File* you can choose from the drop down menu to change your password.



### DOCUMENTS MENU



### Account Opening or User Guide PDF

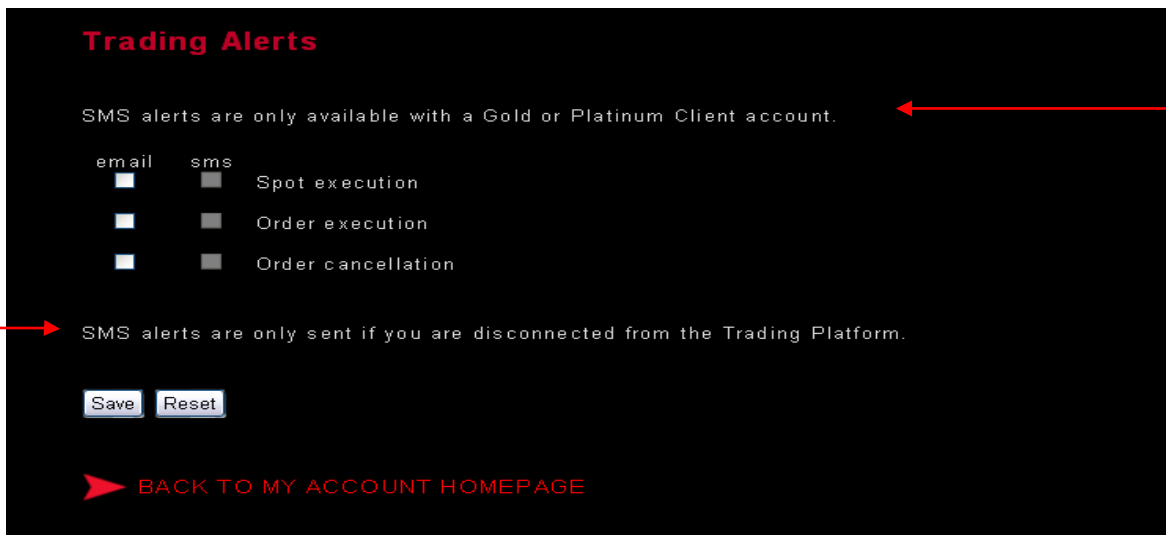
Access to a set of account opening documents for new RTFX clients or access to the RTFX Web Platform user guide in PDF.

## SETTINGS MENU



### Manage Alerts

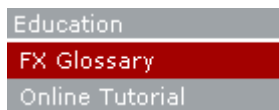
RTFX proposes e-mail and SMS alerts on spot execution, order execution and order cancellation. By clicking on this Menu, your personal RTFX page, on [my.realtimeforex.com](http://my.realtimeforex.com) (client) or [my.realtimeforex.com](http://my.realtimeforex.com) (demo), will open, on this specific alerts management page.



*You should first define your personal details (phone numbers, email address, etc.) if it hasn't been done yet. After that you can configure your alerts settings to your convenience.*

SMS is only available to RTFX “Gold” and “Platinum” customers, and is only sent when the client is disconnected from the platform.

## EDUCATION MENU



## **FX Glossary / Glossaire FX**

For newcomers to the foreign exchange market as well as experienced traders looking for additional information, RTFX publishes a Forex glossary of terms. Selecting these menu items opens the FX Glossary in a browser (in English and French).

## **Online Tutorial / Didacticiel en ligne**

Discussions of which economic indicators influence the forex market and how they do so, the use of technical analyses and technical indicators are presented in the RTFX web site Online Tutorial. This menu opens the Online Tutorial.

## **RF TraderTip Menu**



This menu is the presentation of *Nostramo* system. It includes all the technical indicators (resistance, support, channels, moving average, oscillator, projection, objectives, cycle, overbought or oversold area, etc...). This page summarises the selected currency pairs' situation.

*Nostramo* generates daily, weekly and monthly commentaries, giving the key entry and exit points as well as the risky points.

It gives also general trading information, such as the figures, and you will find a chat system and numerous links that will help you throughout the platform (click on [RF TraderTip](#) for further information).

## **FX News Menu**



## **Daily Market Comments / Commentaires de marché**

Each day, RTFX publishes a market commentary. This commentary is posted on the [www.realtimeforex.com](http://www.realtimeforex.com) web site and can be accessed by selecting the *News Menu / Daily market comments*. Selecting this menu item opens the Daily Market Comment web page in a browser session, as shown below (in English and French).

**Calendar of Events / Calendrier d'évènements**

RTFX publishes on its web site a preview of upcoming events of interest to the forex market. These menu items open that page.

**Weekly Indicators / Indicateurs économiques**

RTFX in the Weekly Indicators web page publishes a scheduled release of economic indicators. These entries open that page.

**Help Menu**

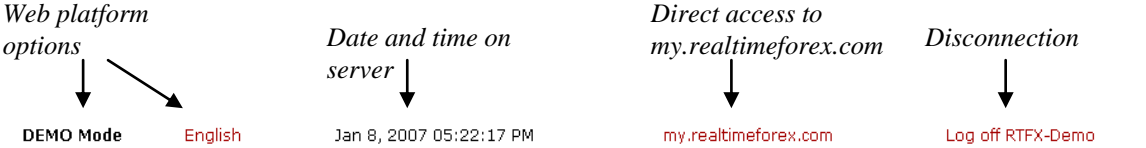


**User Guide PDF / Guide de l'utilisateur PDF**

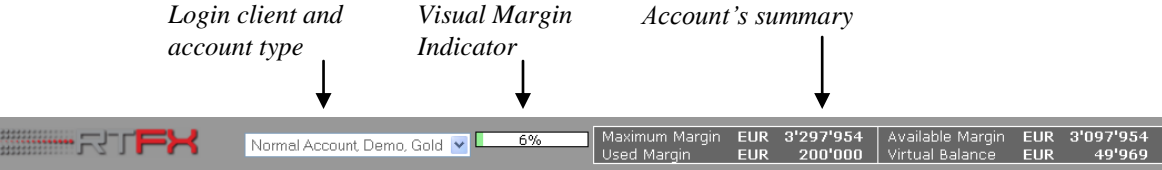
Web access to the RTFX™ Web Trader user guide (this document is in PDF format), in English and French.

**Headers**

**Top Header**



**Bottom Header**



**Log Off Frame**

At log off, a new window is displayed, summarising all open positions, active orders and pending trades, for each account.



## **Annex - Charting tool: ITCharts Light (2006)**

### **INTRODUCTION**

This presentation will allow you to understand the basics of the ITCharts Light tool in just a few minutes.



**Views**

You can modify the time interval of the charts by using the drop-down list located in the upper right hand side of the software:



You have a large set of choices at your disposal:

- Tick by Tick
- (x) Ticks
- 1 Second
- (x) Minutes
- 1 Minute
- 2 Minutes
- 3 Minutes
- 5 Minutes
- 10 Minutes
- 15 Minutes
- 30 Minutes
- Hourly
- Daily
- (x) Days
- Weekly
- Monthly

Please note that modification of the time interval automatically changes all the charts, as well as all the indicators and lines drawn.



**Duration: selecting the number of visible bars**

The following buttons allow you to display more or less bars in the screen:



**Drawing functions**

This section gives some easy to use examples of the drawing interface.



The toolbar located at the top to the left of the tool gives you access to all drawing features.

**Tracing Lines**

You can draw lines of support, resistance and channels. To do this, simply select the icon framed in yellow as shown in the image below:





Left-click where you want to define the first point of the line. Move the mouse and left-click again to define the second point of the line. The line will be drawn.

### **Modifications**

Remember that every object drawn on the graph can be modified or deleted later on by using the appropriate tool.



For example, the button framed in yellow allows moving a line. After clicking on the button, left-click on the line you want to move. Once the movement has been made, left-click again to leave the line in this new position.

### **Description of the toolbar buttons**

#### **A. Zoom views in the chart**



The icon that looks like a magnifying glass represents the zoom feature, selected by default.

To define the first date of the period of time on which to zoom, left-click on the corresponding chart area. Then, move the mouse towards the right and left-click again to define the second date. You can use the horizontal scrollbar to display the prices at other dates within the same zoomed view.

## B. Drawing a line



The icon shown in yellow allows is used to draw lines. Click with the left button of the mouse to define successively two points which will be crossed by the line.

## C. Drawing a horizontal line



The icon shown in yellow also allows the drawing of a line, but in this case the line will be horizontal.

## D. Fibonacci levels



Select the icon shown in yellow, then left-click on the two points of the chart that will define the end values of the Fibonacci levels.

A series of horizontal lines are drawn at the Fibonacci levels of 0.0%, 23.6%, 38.2%, 50%, 61.8% and 100% of the trend line.

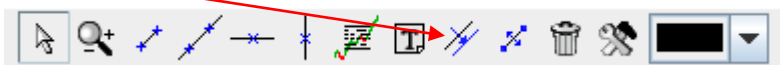
## E. Moving an object



The icon shown in yellow allows you to move any drawn object.

After you have selected it, left click on the item you wish to move. Once you have completed the move, left click again to fix the new position of the item.

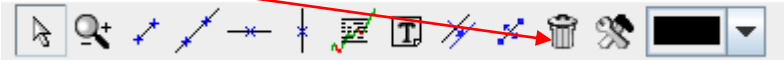
## F. Copying an object



The icon shown in yellow representing two parallel lines enables you to copy any drawn object in your chart. Simply click on the object to copy and click anywhere else on the chart to paste the new object.

Notice that when you approach an object, this object turns to light blue, indicating that you can already click with your left mouse button to select it, thus preventing you from having to aim precisely on the object and giving you a wider area in which to click.

**G. Deleting an object**

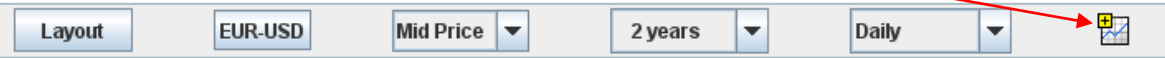


Clicks on the icon shown in yellow, then click again on any object (text or line) to delete it.

Notice that when you approach an object, this object turns to light blue, indicating that you can already click with your left mouse button to delete it.

**Add Indicators**

There are a large number of indicators available. They are the most commonly used by the best technical analysts in the world.

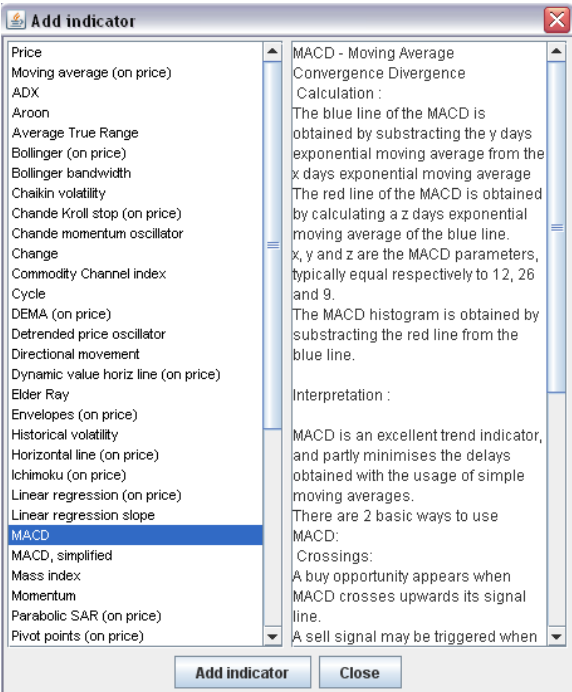


Each indicator displayed in the "Settings" window may be modified. This means you can sharpen your technical analyses by adjusting the parameters of the selected indicators by clicking on the icon below.



For instance, you can modify the number of days to be considered in the calculation of the moving average. You can in fact notice that three separate moving average calculations are available in the workstation; should you not wish a moving average to appear, simply type 0 in the relevant field.

Default values are already set for all indicators. However, you may change these values as you wish.





## **Indicators**

These indicators are displayed as individual graphs beneath the main chart. You can check as many indicators as you wish at the same time

**MACD** – The buy signal is given whenever the blue or yellow line crosses the red line from the bottom. The sell signal is given every time the blue or yellow line crosses the red line from the top.

**RSI** – It is an overbought / oversold indicator. Buy signals occur generally when crossing below the level of 30 and sell signals when crossing above the 70 level. The RSI indicator oscillates between 0 and 100.

**Stochastic** - It is an overbought/oversold indicator depending on its position relative to the 0 level. It also gives good divergence signals. A bullish divergence occurs when the stock price makes new lows while the Stochastic fails to make new lows. A bearish divergence occurs when the stock price makes new highs while the Stochastic fails to make new highs.

**Williams %R** – This is an overbought/oversold indicator. Values -80 and -20 can be used as limits to detect overbought/oversold situations.

**Momentum** - This oscillator has an unlimited range. Crossing the 0 level gives good buy/sell opportunities. It also gives good divergence signals.

**Price Oscillator** - Buy/Sell opportunities occur when the oscillator crosses the 0 level.

**Chaikin Volatility** - It indicates buying and selling pressures. When the money flow stays significantly above 0, it indicates buying pressure and vice versa.

**Standard Deviation** - Standard deviation measures the volatility of prices of the analysed stock.

For more information about these and other indicators, please visit our [Online Tutorial](#).

